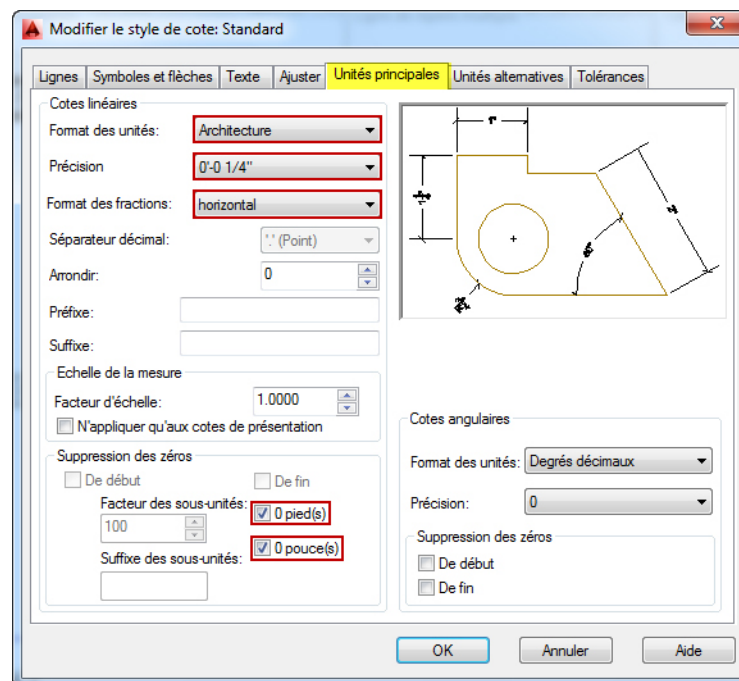


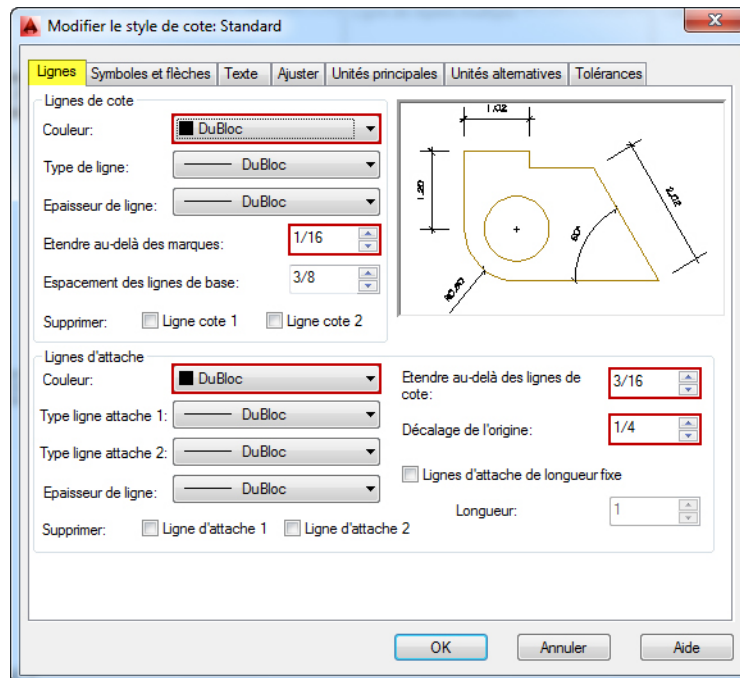
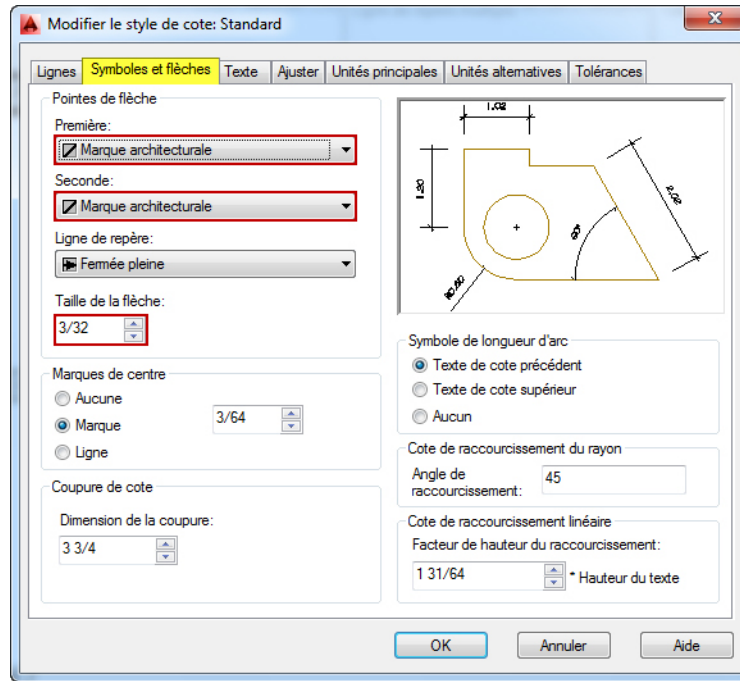
Voici un résumé des commandes et des notions abordées dans le **module 12**. Nous vous recommandons de compléter ce résumé, de l'imprimer et de le consulter lors de la réalisation de vos travaux.

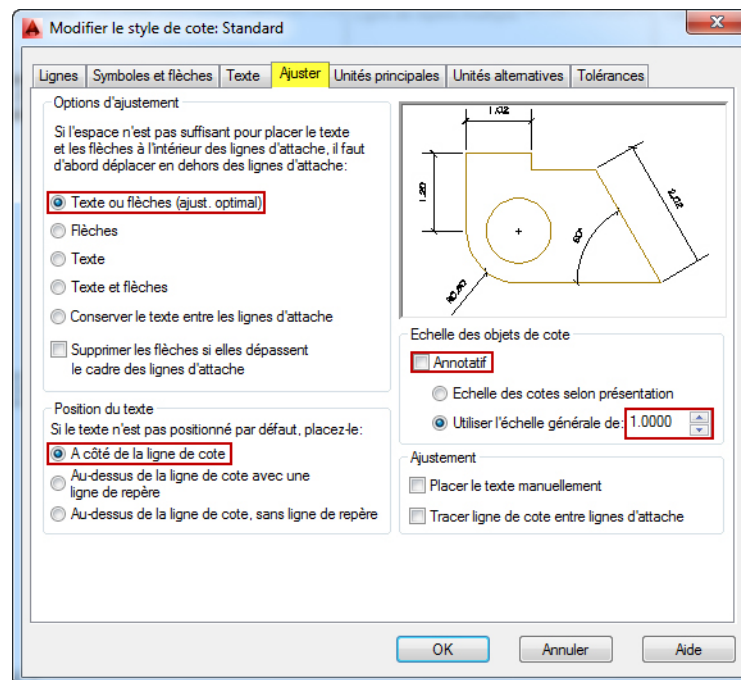
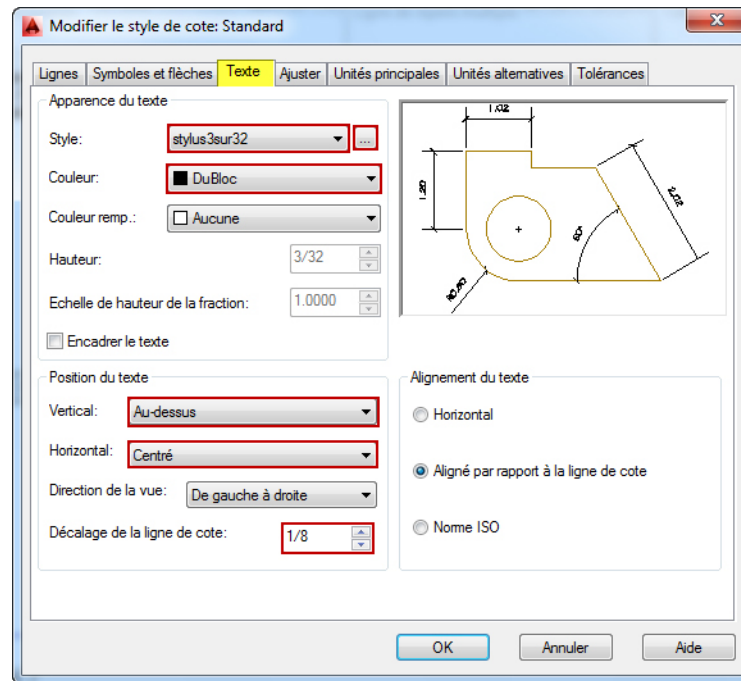
## Créer un style de cote

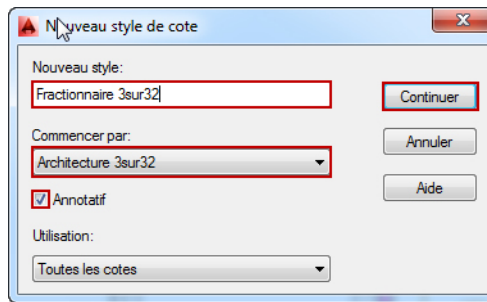


### Style de cote









---

---

## Ajouter des cotes



**Linéaire**



**Continuer**



**Alignée**



**Angulaire**



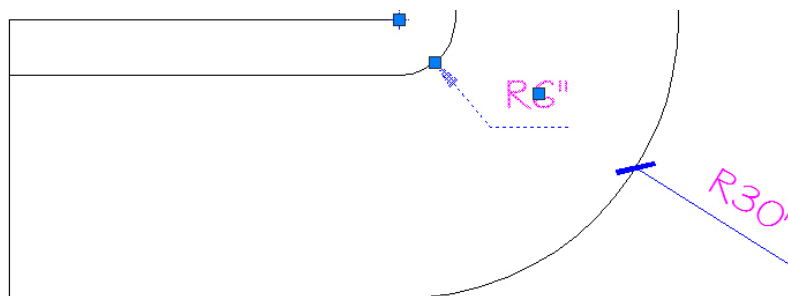
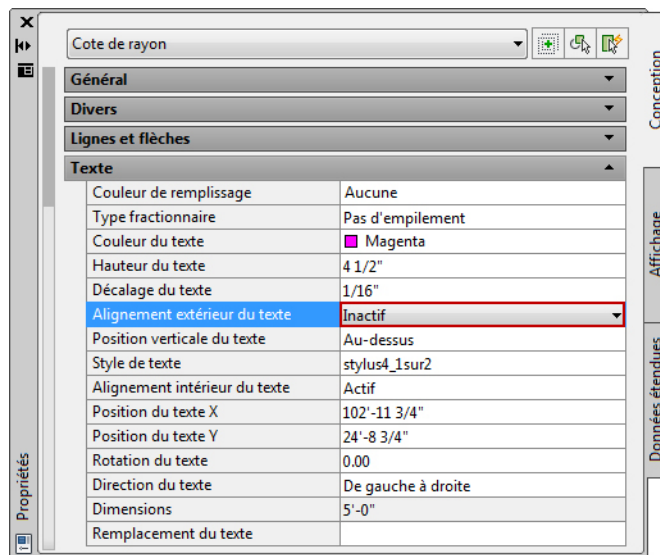
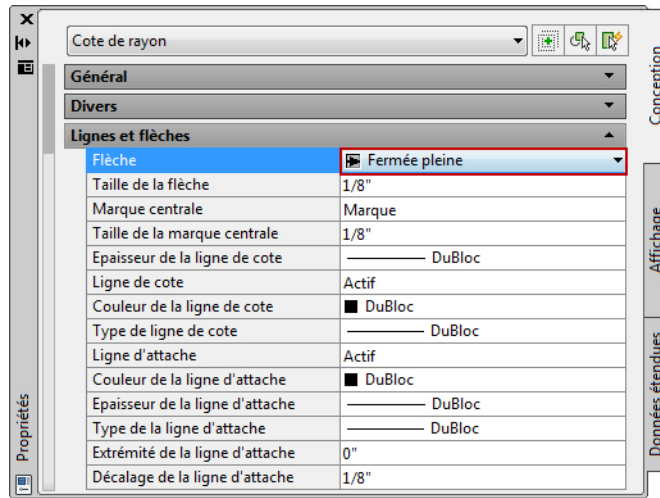
**Rayon**

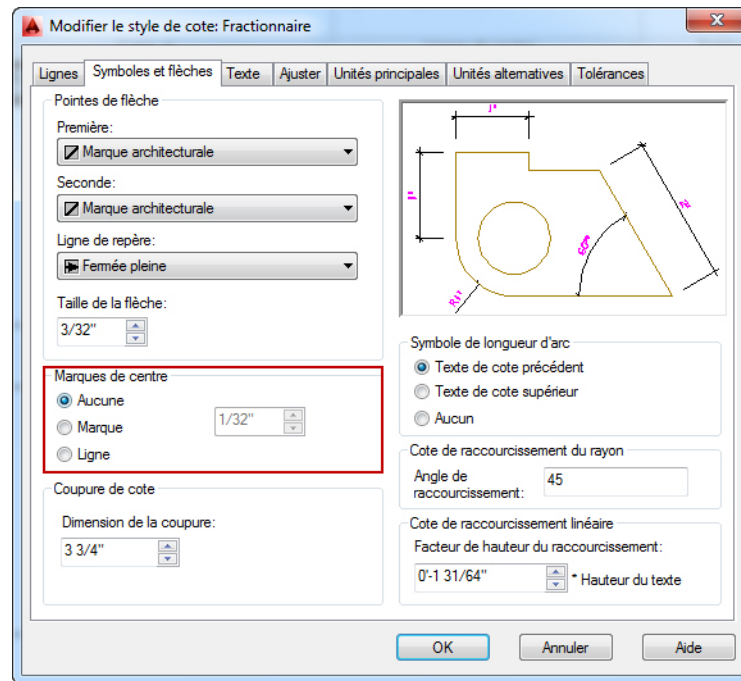


**Diamètre**

## Modifier des cotes

- 1- **Modifier le style de cote**
- 2- **Déplacer les poignées**
- 3- **Palette Propriétés**
- 4- **Décomposer**





---

---

 **Copier les propriétés**

 **Renommer**

 **Purger**

---

---